



# Lead Free\* Brass Gate Valve, Threaded

## Product Specifications

MAINLINE®

✓ To Submit	Part #	Size
	ML206AB-1/2	1/2"
	ML206AB-3/4	3/4"
	ML206AB-1	1"
	ML206AB-11/4	1-1/4"
	ML206AB-11/2	1-1/2"
	ML206AB-2	2"
	ML206AB-21/2	2-1/2"
	ML206AB-3	3"

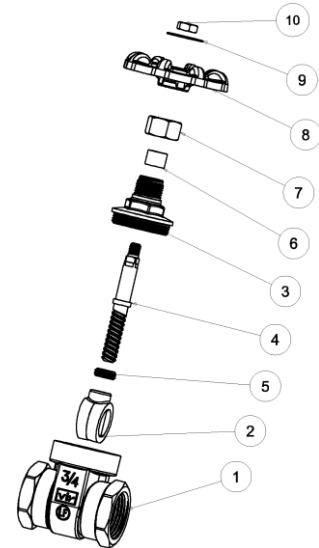
### Product Features:

- 125# WSP / 200# WOG
- Brass Body
- Screw in Bonnet
- Non-Rising Stem
- Solid Wedge Disc
- Threaded Ends
- AB1953, NSF-61 & NSF-372 Certified



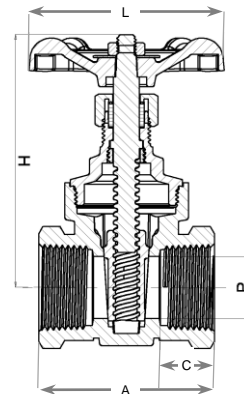
### Materials & Specifications:

Item	Description	Material	Specification
1	Body	Low Lead Brass	C28500
2	Wedge	Low Lead Brass	C28500
3	Bonnet	Low Lead Brass	C28500
4	Stem	Low Lead Brass	C28500
5	Ring	Low Lead Brass	C28500
6	Packing Ring	Graphite	WRAS approved
7	Packing Nut	Brass	B124 C37700
8	Hand Wheel	Aluminum	B85
9	Disc	Aluminum	B85
10	Nut	Steel / Zn Plated	A36



### Dimensions (inches), Weights (lbs.), & Valve Data:

Size	1/2"	3/4"	1"	1-1/4"	1-1/2"	2"	2-1/2"	3"	4"
A	1.97	2.12	2.44	2.75	2.84	3.23	3.81	4.37	5.15
C	0.65	0.65	0.78	0.86	0.86	0.96	1.1	1.29	1.49
H	2.79	3.17	3.93	4.21	4.82	6.27	70.9	8.03	10.31
L	2.36	2.36	2.75	3.15	3.15	3.75	5.12	5.12	5.9
P	0.51	0.74	1	1.25	1.5	2	2.36	2.79	3.81
Cv	10.8	23	42	72	120	210	309	413	725
Wt	0.49	0.78	1.13	1.82	2.38	3.97	5.78	8.88	15.25



### Warranty

See warranty information for more details.

All dimensions listed are nominal. MAINLINE® reserves the right to make product and material changes at any time without notice.

Contact your sales representative for more information or visit our website at [mainlinecollection.com](http://mainlinecollection.com)