



**MAINLINE®**

# Lead Free\* Brass Gate Valve, Solder

## Product Specifications

✓ To Submit	Part #	Size
	ML207AB-1/2	1/2"
	ML207AB-3/4	3/4"
	ML207AB-1	1"
	ML207AB-11/4	1-1/4"
	ML207AB-11/2	1-1/2"
	ML207AB-2	2"

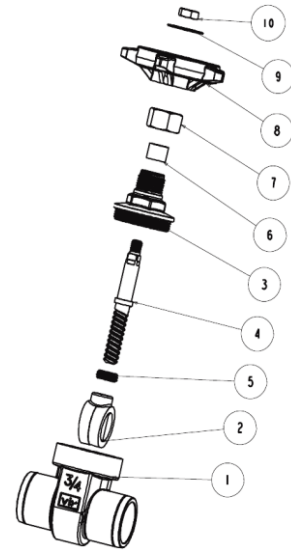
### Product Features:

- 125# WSP / 200# WOG
- Brass Body
- Screw in Bonnet
- Non-Rising Stem
- Solid Wedge Disc
- Solder Ends
- AB1953, NSF-61 & NSF-372 Certified



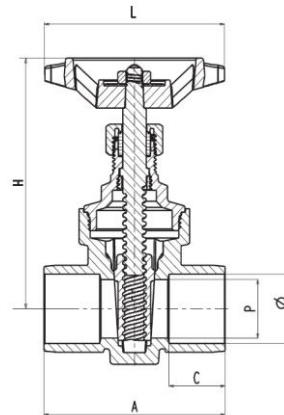
### Materials & Specifications:

Item	Description	Material	Specification
1	Body	Low Lead Brass	C28500
2	Wedge	Low Lead Brass	C28500
3	Bonnet	Low Lead Brass	C28500
4	Stem	Low Lead Brass	C28500
5	Ring	Low Lead Brass	C28500
6	Packing Ring	Graphite	WRAS approved
7	Packing Nut	Brass	B124 C37700
8	Hand Wheel	Aluminum	B85
9	Disc	Aluminum	B85
10	Nut	Steel / Zn Plated	A36



### Dimensions (inches), Weights (lbs.), & Valve Data:

Size	1/2"	3/4"	1"	1-1/4"	1-1/2"	2"
∅	15.92 - 16.02	22.27 - 22.37	28.65 - 28.75	35.00 - 35.1	41.35 - 41.47	54.05 - 54.17
A	1.97	2.12	2.44	2.75	2.84	3.23
C	0.65	0.65	0.78	0.86	0.86	0.86
H	2.79	3.17	3.93	4.37	4.94	6.27
L	2.51	2.51	2.99	3.54	3.54	4.13
P	0.51	0.74	1	1.25	1.5	2
Cv	10.8	23	42	72	120	210
Wt	0.53	0.82	1.17	1.83	2.38	4.03



### Warranty

See warranty information for more details.

All dimensions listed are nominal. MAINLINE® reserves the right to make product and material changes at any time without notice.



COMPLIES WITH LEAD-FREE PLUMBING LAWS  
\* ≤ .25% Pb



Certified to NSF/ANSI 61-G

Contact your sales representative for more information or visit our website at [mainlinecollection.com](http://mainlinecollection.com)